

SweetPea³

USER MANUAL



Thank you for purchasing the SweetPea3 – the MP3 player designed to grow with your child.

SweetPea3 Features

Your SweetPea3 has the following features:

- Stores up to 32 hours of music and stories
- Transfers music from your computer over a USB cable
- Plays MP3, WMA, AAC and OGG files
- Plays Audible
- Simple *Play/Stop*, *Next Song* and *Previous Song* buttons
- Turns on by pressing any button, automatically shuts itself off
- Hidden parental menus for adjusting player settings, including volume control
- Stores songs in three separate playlists
- Programmable Auto-Off times

Computer System Requirements

- Pentium III 500MHz or higher recommended
Macintosh iMac G3 or higher
- Windows® 2000 SP4, XP, 7 or Vista
- Mac OS X Version 10.1.5 or higher
- USB port
- CD-ROM (for transferring music from a CD)
- Internet connection (for purchasing music online)

SweetPea Toy Company Ltd.

Email: support@sweetpeatoyco.com

Website: www.sweetpeatoyco.com

Phone: (403) 287-3624

Address: Suite 60,
4620 Manilla Road SE
Calgary, Alberta, Canada
T2G 4B7

It is highly recommended that you register your name and contact information on our website should we need to contact you for important information regarding your SweetPea3. Go to www.sweetpeatoyco.com for more information and details on our privacy policy.

FCC Information

This device complies with part 15 of the FCC Rules. Operation is subject to the following two conditions: (1) This device may not cause harmful interference, and (2) this device must accept any interference received, including interference that may cause undesired operation.

This equipment has been tested and found to comply with the limits for a Class B digital device, pursuant to Part 15 of the FCC Rules. These limits are designed to provide reasonable protection against harmful interference in a residential installation. This equipment generates, uses and can radiate radio frequency energy and, if not installed and used in accordance with the instructions, may cause harmful interference to radio communications. However, there is no guarantee that interference will not occur in a particular installation. If this equipment does cause harmful interference to radio or television reception, which can be determined by turning the equipment off and on, the user is encouraged to try to correct the interference by one or more of the following measures:

- Reorient or relocate the receiving antenna.
 - Increase the separation between the equipment and receiver.
 - Connect the equipment into an outlet on a circuit different from that to which the receiver is connected.
 - Consult the dealer or an experienced radio/TV technician for help.
- This Class B digital apparatus complies with Canadian ICES-003.

Safety Information

Hearing Safety

The SweetPea3 speaker volume levels are safe during normal operation. Prolonged exposure to the speaker at very close proximity could lead to hearing damage now or later in your child's life.

- Do not allow your child to sleep holding the SweetPea3. The speaker could fall too close to the ear for a prolonged period.
- Do not allow your child to hold the speaker directly to their ear for a prolonged period of time.
- Do not use headphones for children under age 6. Older children may use headphones occasionally for very short lengths of time (less than 20 minutes).
- Do not allow your child to use headphones when the HPhone Loud setting is ON (see Settings information on p.5). **This setting is not intended for use by children and can harm their hearing.**

General Safety

- Do not allow children under age 6 to use headphones because they may not hear warning sounds in their environment.
- Do not allow your child to play with the SweetPea3 while it is plugged in to the AC adapter.
- Do not allow your child to play with the SweetPea3 while it is plugged into the USB cable.
- Do not allow your child to play with the SweetPea3 with the battery door open or missing.

Care for your product

- Your SweetPea3 is water resistant but is not waterproof. Do not immerse your SweetPea3 in liquids.
- Do not allow your child to play with the SweetPea3 in water such as a bath or pool.
- Avoid direct spray of liquids.
- Clean with a mild detergent and a soft damp cloth. Never use solvents.
- Do not open the SweetPea3. There are no user serviceable parts inside.
- Do not store the SweetPea3 in direct sunlight or near high temperatures. Avoid parked cars on hot days.

About the battery

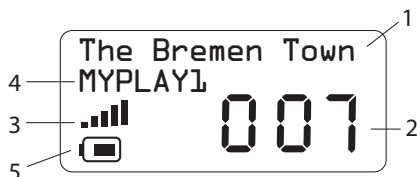
- Use a small screwdriver to open the battery compartment. Do not remove the small plastic retaining washers, as loose screws can pose a choking hazard.
- Insert one 'AA' battery with polarity corresponding to the diagram on the bottom of the battery compartment. Replace the battery door using a screwdriver. Do not over-tighten.
- Remove batteries before storing the player for long periods of time, as they may leak and damage the player. Discard leaking batteries immediately, as they can cause skin injury.
- Do not attempt to charge batteries that are not intended to be recharged.
- Dispose of batteries according to federal, state and local regulations.
- The SweetPea3 does not recharge batteries.

What is special about an MP3 Player?

MP3 players store the music on a chip inside the player. This means no moving parts. Music can be transferred directly from your computer using a USB cable.

For a child's music player, nothing is better. No small parts to break off, no CDs to scratch and hours of music with the push of a button.

Display



1. Displays player status information
2. Song number
3. Volume indicator – 5 bars is the loudest
4. Current playlist name
5. Battery level indicator

Getting Started

Turning ON

Press any button to turn the SweetPea3 On. It takes a few seconds for the music to queue up before it plays.

Turning OFF

The SweetPea3 will shut itself off after one minute when no music is playing (when the display reads "Stopped"). The player may also shut itself off while playing music, depending on the Auto-Off settings (see Auto-Off section below).

Song Selection

The display shows the number of the current song. Press the Left or Right buttons to play the previous or the next song respectively.

When the player reaches the end of the music list, it will continue playing from the beginning.

Fast Forward/Rewind

Press and hold the left or right buttons.

Settings Menu

The settings menu has been hidden from your child to give you control of functions such as volume and auto-off times.

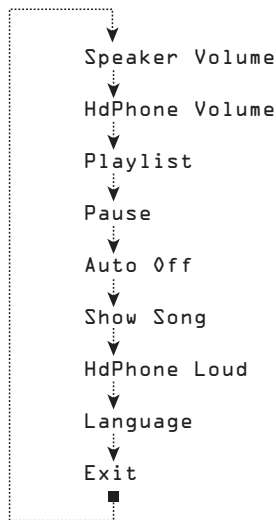
Entering the Settings Menu

Press and hold the Left and Right buttons simultaneously for over 6 seconds. When the display reads "Menu", release the buttons.



Scrolling through the Settings menu

Pressing the middle button will scroll through the Settings menu. Pressing the left and right buttons will adjust the value of each setting. The order of items in the menu is:



Each item in the menu is described as follows:

Speaker Volume

The current speaker volume setting is displayed as a number between 1 and 10 (loudest).

HdPhone Volume

The current headphone volume setting is displayed as a number between 1 and 10 (loudest).

Playlist

The current playlist is displayed as a number between 1 and 3. A playlist is simply a group of songs. You can create up to three playlists on the SweetPea3. Group songs however you like. For instance, you might put high energy songs in Playlist 1 and lullaby songs in Playlist 2.

Select the Aud playlist to play Audible audiobooks.

Note: empty playlists are not displayed and cannot be selected.

Pause

Pause ON allows the middle button to pause/resume the song. Pause OFF allows the middle button to start and stop the song from the beginning. Very young children may find the SweetPea3 more intuitive with the pause feature off.

Auto Off

The current Auto Off setting is displayed (minutes). This feature turns the player off automatically after playing for a set time. This can be handy at bedtime or to conserve battery power when the child leaves the player running. When this feature is off, the SweetPea3 will play until the stop/pause button is pressed.

Show Song

Shows the song name on the display.

HdPhone Loud

When ON, boosts the headphone volume.

Warning: Do not use the SweetPea3 with headphones on children when HPhone Loud is ON. Turn this setting ON for playing the SweetPea3 through a car stereo or for when adults require loud headphones.

Language

Selects the language shown on the display.

Exit

Press the Left or Right buttons to exit from the Settings menu and return to the normal mode for playing music. The other way to exit from the Settings menu is to simply not press any button for 10 seconds. Press the middle button to scroll back to the top of the Settings menu.



Music Management

The SweetPea3 appears to your computer as a USB hard drive. This means that you can transfer music files to and from the SweetPea3 using Windows Explorer or Mac Finder. You can also drag songs from iTunes to the SweetPea3.

Playlists

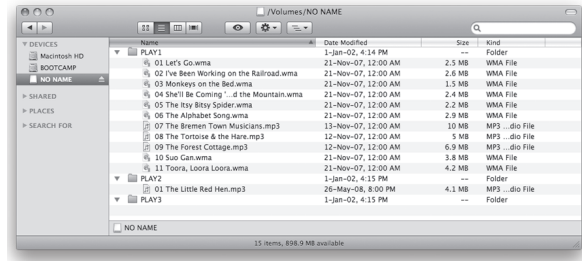
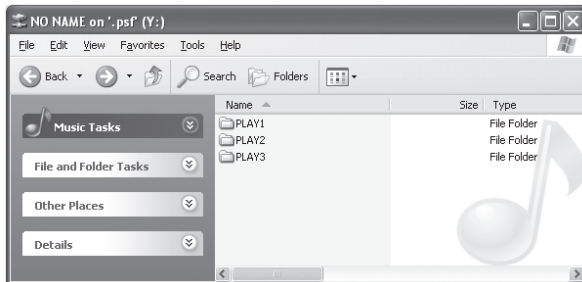
Each folder within the SweetPea3 is a playlist. The folder name is the playlist name. Keep the folder names to 8 characters or less for proper display on the SweetPea3. Create new folders to create new playlists. The SweetPea3 supports up to 99 playlists. Empty folders do not appear in the playlist list in the settings menu.

Transferring Songs

To load songs from your computer onto the SweetPea3, simply drag and drop them from your computer into a folder. Songs not in a folder are not played. You can also drag songs directly from iTunes into a folder.

Songs play in the order they are placed in the folders, in other words, new songs are added to the end of the playlist. One convenient method to order your songs is to place them in a temp folder on the SweetPea3 then drag them one at a time to the playlist folder.

Example Using Windows Explorer



Plug your SweetPea3 into the USB port of your computer using the supplied USB cable. A screen asking what you want Windows to do will appear. Select the Windows Explorer option and select OK. The following screen will appear. Drag and drop songs, normally located in your "My Music" folder, to the playlist folders.

Example Using Mac Finder

Plug your SweetPea3 in to the USB port of your computer using the supplied USB cable. The SweetPea3 should appear in your "Devices" list in the Mac Finder as shown in the screen pictured here. Drag and drop songs from iTunes to the playlist folders.

Getting Songs onto your computer

Use the media player on your computer, such as Windows Media Player or iTunes, to copy songs from your CD collection to your computer. Insert the CD into the drive and your media player should open automatically, giving you the option to copy the CD. Consult the media player's documentation for more information. The recommended import settings are: MP3 encoder, 128kbps, no protection. Do **NOT** use the **iTunes Plus** setting in iTunes.

You can also purchase music and stories from many online sources such as iTunes, Amazon.com and Audible.com. The SweetPea3 currently plays MP3, WMA, AAC, OGG and Audible formatted tracks. Go to www.sweetpeatoyco.com occasionally to check for the availability of other decoders.

Audio Books (Windows only)

The Sweetpea3 plays audiobooks from audible.com. Go to www.audible.com/sweetpea for more information and to download a free audiobook. You must use Audible Manager to transfer Audible content to the SweetPea3.

AC Adapter

Use an AC adapter to avoid draining the battery (such as in a nursery). The AC adapter does not recharge the battery. AC adapters are sold separately and can be purchased at www.sweetpeatoyc.com.

Troubleshooting

Visit www.sweetpeatoyc.com for the latest information on troubleshooting.

Recycling/Disposal

Please consult your local regulations regarding recycling of electronic products. The SweetPea3 is lead-free as it complies with RoHS specifications.

Warranty

Consult the online troubleshooting guide before making a warranty claim. Many issues can be resolved without the need for factory servicing. To make a warranty claim, go to www.sweetpeatoyc.com and fill out the form under "Returns". Include as much information about the problem as possible. You will be provided with further instructions by email regarding how and where to send your SweetPea3 for servicing.

SweetPea Toy Company Ltd. warrants to the purchaser or gift recipient that if any manufacturing defect becomes apparent in this product within 1 year from the original date of purchase, it will be replaced free of charge, including return transportation. This warranty does not include damage to the product resulting from accidents, misuse or leaking batteries.

The provisions of this written warranty are in addition to and not a modification of or subtraction from the statutory warranties and other rights and remedies contained in any applicable legislation, and to the extent that any such provisions purport to disclaim, exclude or limit any such statutory warranties and other rights and remedies, such provisions shall be deemed to be amended to the extent necessary to comply therewith.

Limitation of Warranty:

- THE WARRANTY STATED ABOVE IS THE ONLY WARRANTY APPLICABLE TO THIS PRODUCT. ALL OTHER WARRANTIES, EXPRESS OR IMPLIED (INCLUDING ALL IMPLIED WARRANTIES OF MERCHANTABILITY OR FITNESS FOR A PARTICULAR PURPOSE) ARE HEREBY DISCLAIMED. NO VERBAL OR WRITTEN INFORMATION GIVEN BY SWEETPEA TOY COMPANY LTD., ITS AGENTS OR EMPLOYEES SHALL CREATE A WARRANTY OR IN ANY WAY INCREASE THE SCOPE OF THIS WARRANTY.
- REPAIR OR REPLACEMENT AS PROVIDED UNDER THIS WARRANTY IS THE EXCLUSIVE REMEDY OF THE CONSUMER. SWEETPEA TOY COMPANY LTD. SHALL NOT BE LIABLE FOR INCIDENTAL OR CONSEQUENTIAL DAMAGES RESULTING FROM THE USE OF THIS PRODUCT OR ARISING OUT OF ANY BREACH OF ANY EXPRESS OR IMPLIED WARRANTY ON THIS PRODUCT. THIS DISCLAIMER OF WARRANTIES AND LIMITED WARRANTY ARE GOVERNED BY THE LAWS OF THE STATE OF INDIANA. EXCEPT TO THE EXTENT PROHIBITED BY APPLICABLE LAW, ANY IMPLIED WARRANTY OF MERCHANTABILITY OR FITNESS FOR A PARTICULAR PURPOSE ON THIS PRODUCT IS LIMITED TO THE APPLICABLE WARRANTY PERIOD SET FORTH ABOVE.





sweetpea toys

SweetPea Toy Company Ltd.

60, 4620 Manilla Road SE, Calgary, Alberta, Canada T2G 4B7